



**Why not scan more  
and work less?**

**Fast 3D scanners**





UP3D is a high tech company headquartered in Shenzhen since 2013.

As one of the only few companies in the world that are capable of developing a full dental CAD/CAM solution including software and hardwares.

We are committed to provide our worldwide customers with high quality dental CAD/CAM products to benefit from the digital dental revolution.



[www.up3d.cn](http://www.up3d.cn) [info@up3d.cn](mailto:info@up3d.cn) 0755-26983202

# Full Dental CAD/CAM Solution

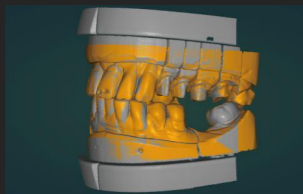


## UPSCAN users' favorite features:



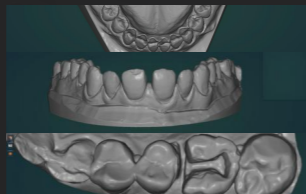
### Big articulator scan

Capture occlusion relationship directly by side-lay scanning big articulators.



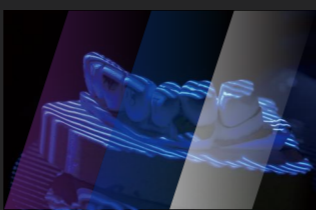
### Automatic alignment

Intelligent algorithm, saves manual work



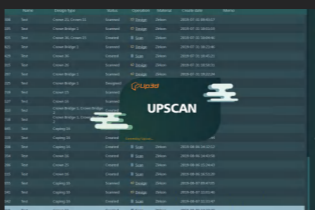
### Wide Applications

Veneer model, implant model, uncut model, and regular cut model, impressions



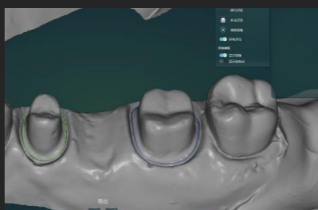
### Multi-color projector

Adaptable color projector. Red, blue and white colors projecting to adapt to complex model colors



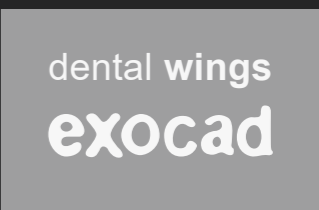
### UPSCAN APP

Easy to operate scanning software, free upgrade



### Margin line

Draw margin line in UPSCAN and export margin data to design software.



### Open system

Open stl output and integrated with exocad and dentalwings

# UP360+

Problems scanning a narrow interproximal gap?  
Try UP360+

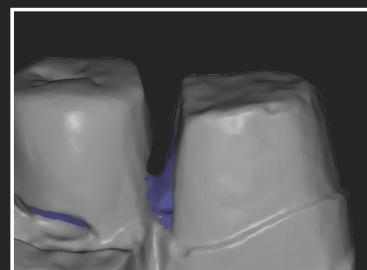
## Scan without blind angle

Scan impression, uncut, orthodontic, veneer models clearly.



UP360+

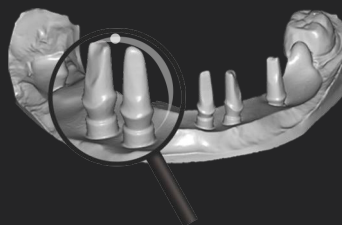
vs



Traditional scanner

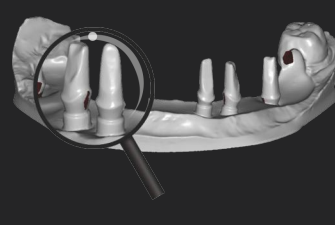
## Full arch implants scanned in a single step

No need to loosen and fasten the abutment screws.



UP360+

vs

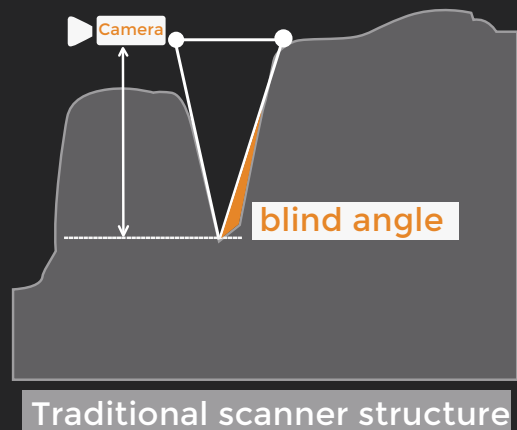
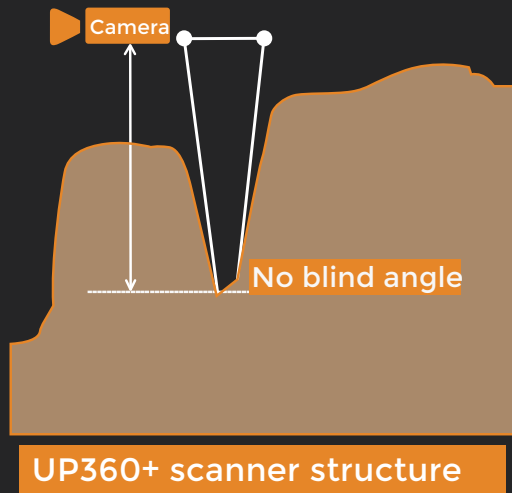


Traditional scanner

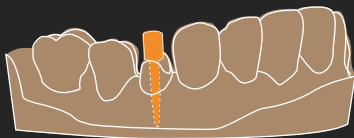


# Scan without blind angle

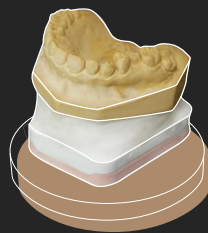
Scan impression/uncut models; data without blind angle; no need to fill oles.



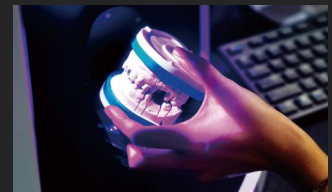
All-round solution for  
post&core scanning



Support virtual articulator



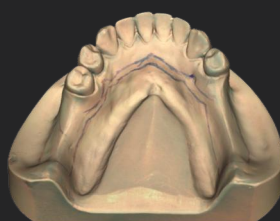
New way of occlusion scan



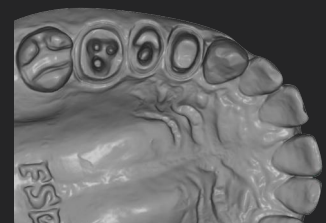
Full arch implant scanned  
in one single step



True color texture scanning

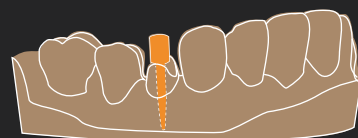


post&core model direct scan

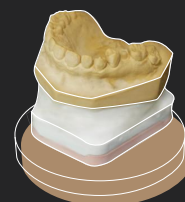


# UP300+

## High speed scanner fully upgrade



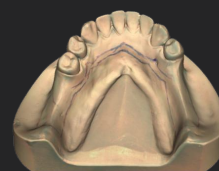
All-round solution for  
post&core scanning



Support virtual articulator



New way of occlusion scan



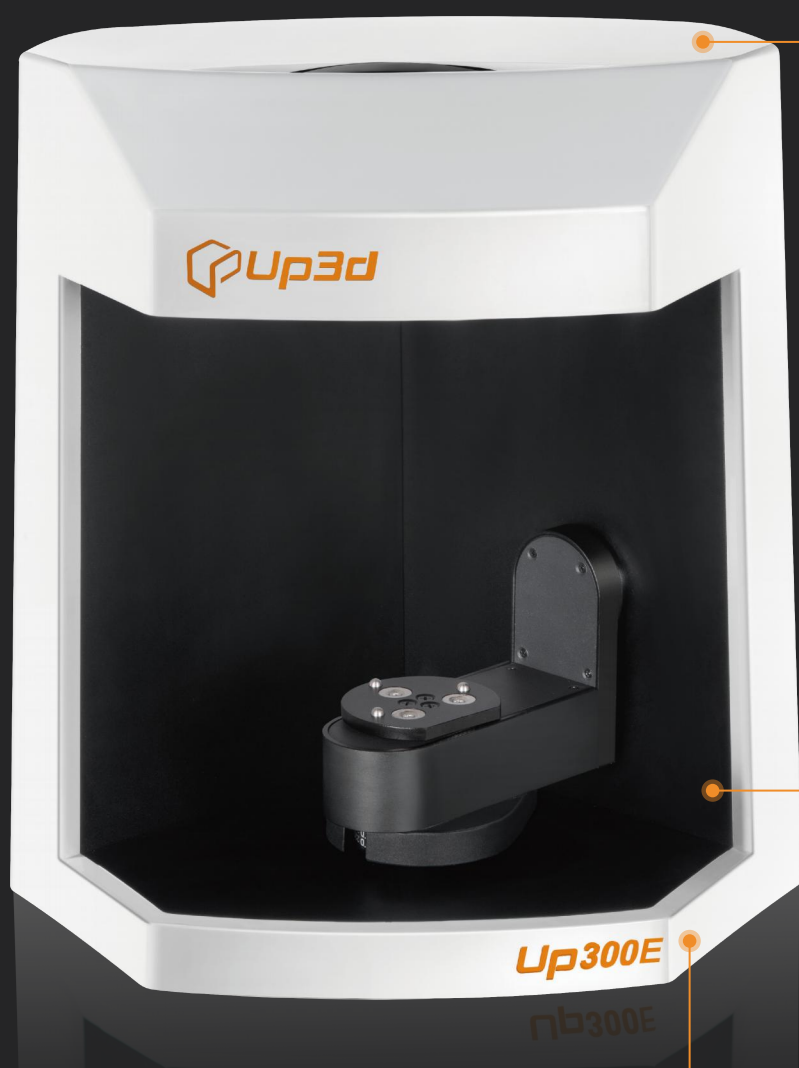
True color texture scanning

### All-in-one model scan

Comparing with traditional scan method,  
UP300+ will cut off 50% of your work time  
by scanning a quadrant with two steps only.

# UP300E

The most economical scanner for you



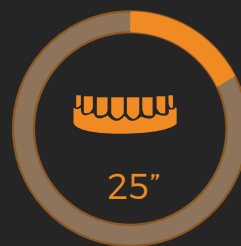
## High speed

Scan full arch: 25s;

Scan upper&lower impression: 3 minutes



12 unit multi-die scan



Model scanning

## 12 unit multi-die scan

Scan 12 unit die with free placement in 20s.

## Highly cost-effective



Model	UP360+	UP300+	UP300E
Size	305*310*550（mm）	300*300*400（mm）	
Weight	14kg	10kg	
Camera	2*2.0（MP）High frame rate	2*1.3（MP）High frame rate	
Precision	<6 microns	<10 microns	
Projector	Customized blue-light, support multi-color scanning		
Interface	USB 3.0		
Output formats	STL；UM；PLY；OBJ		
Power supply	AC110-240V，50HZ		



Model	UP360+	UP300+	UP300E
All-in-one scanning	√	√	-
One click scanning triple tray	√	√	-
Mark margin in scan software	√	√	-
Texture scanning	True color texture scanning	True color texture scanning	Color texture
Impression scanning	★★★★★	★★★★★	★★
Unsectioned model scanning	★★★★★	★★★★★	★★
Speed:			
Speed(Full arch)	⚡⚡⚡⚡	⚡⚡⚡⚡	⚡⚡⚡⚡
Speed(Triple tray)	⚡⚡⚡⚡	⚡⚡⚡⚡	-
Feature	Unsectioned model	All-in-one scan	Highly cost effective
	All-in-one scan	one-click triple tray scan	
	one-click triple tray scan		