

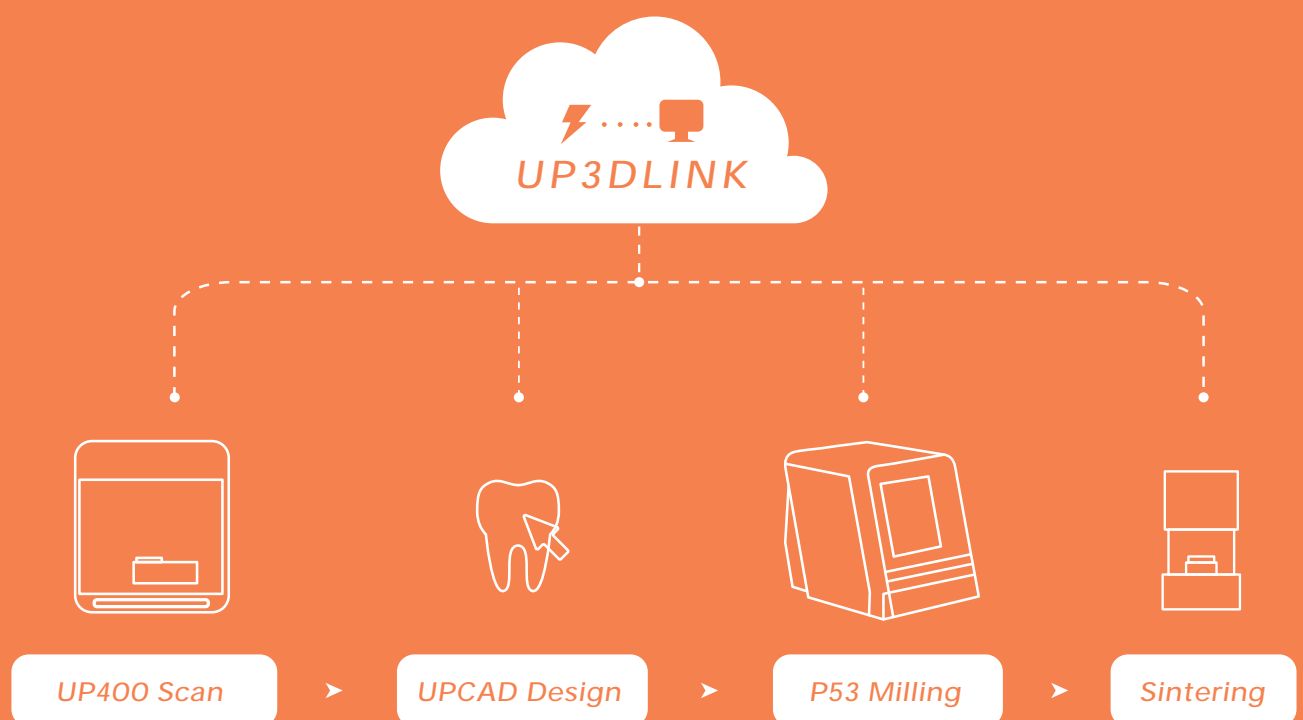
UP3D Smart Dental Laboratory

Intelligent Manufacturing System





UP3D intelligent manufacturing system





To build smart dental laboratory,
UP3D launches intelligent Manufacturing system:

UP3DLINK intelligent platform

enables to control whole process of machines to make
the process visible and quantifiable.

Real-time monitoring of production conditions to help scale production



UP3DLINK

Intelligent management platform

UP3DLINK

Helping the digital transformation of laboratories



Helping large-scale

You can view the working status and processing conditions of multiple devices at the same time,
Real-time monitoring to realize intelligent production



Build smart dental laboratory

Only need UP3DLINK platform to control and view the working status of the entire system



Improve management efficiency

It helps laboratories to sort out and track orders through order completion and rework rate.
Perform big data analysis and order report monthly to comprehensively improve the efficiency of factory management.

01

Ultra high speed scanning

Only 12 seconds to scan full arch

02

Unsectioned model

It can scan the narrow gap model, orthodontic and unsectioned models very well

03

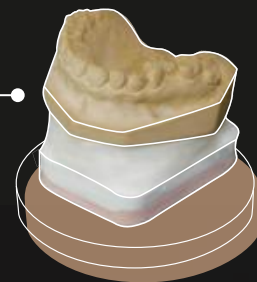
True color texture

Restore texture color perfectly

Enables to import true color texture model as PLY format in 3shape and Exocad software

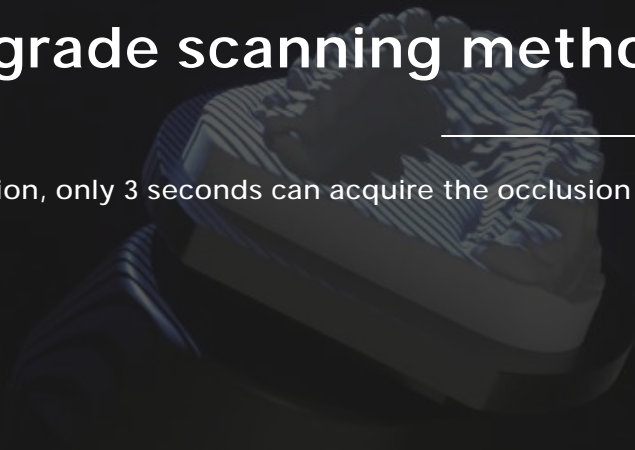
Virtual occlusion function

Obtain accurate jaw motion simply and quickly,
Reducing the adjustment time



New upgrade scanning method

Handheld occlusion, only 3 seconds can acquire the occlusion



UP400

High-speed
model scanner

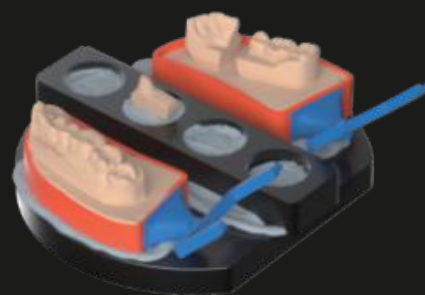


All in one

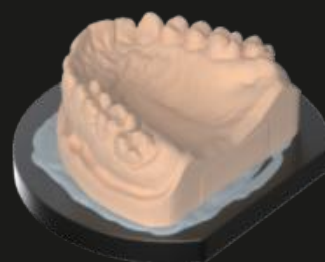
Compared with traditional way.

UP400 only needs 2 steps can

scan all in one model. Save your 50% of working time.



Unsectioned model



*High-speed
model scanner*



UPCAD

Self-developed dental design software



Crown (Bridge)



Coping



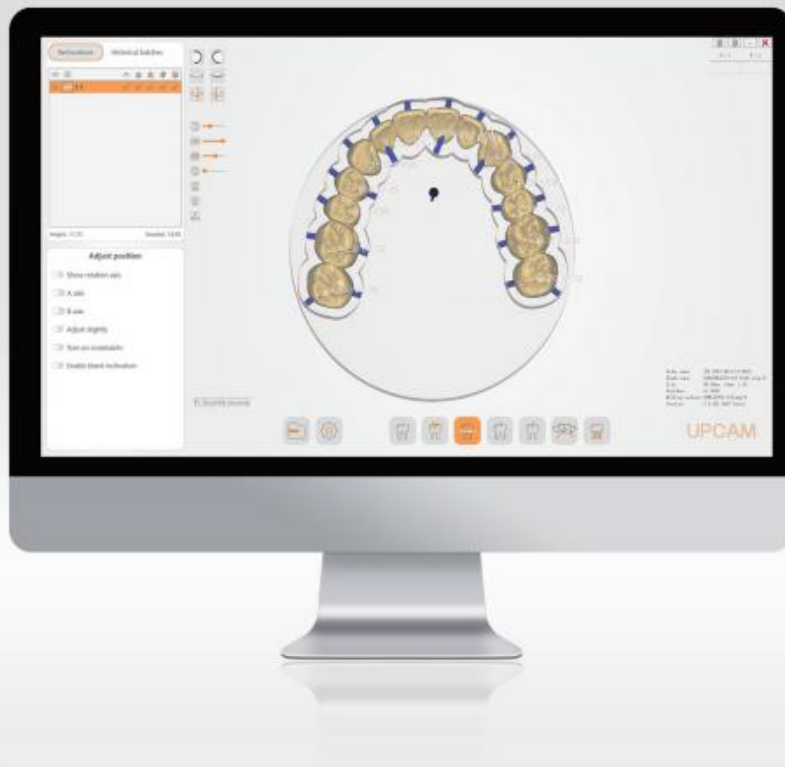
Veneer



Inlay/Onlay

UPCAD is an independently engineered dental design software by UP3D since 2011, specially customized for dental technicians, and easy to learn and use. Enables users to upload database.

More modules are coming soon...



Quality assurance
(Germany Core)



Fast calculation



Easy operation



Customized solution

UPCAM

UPCAM software

UPCAM is a dental CAM software which is developed by UP3D and ModuleWorks from Germany. (ModuleWorks is one of the most advanced CAM core algorithm supplier in the world).

Suitable for all UP3D mills. UPCAM supports all types of dental restoration processing.

P53

5-axis milling machine

Helping intelligent and scale production.



P53 integrates with UP3DLINK to Increase productivity and achieve efficient management.



Full CAD/CAM hardware and software are developed by UP3D

All software and hardware are independently developed by UP3D with core technology, intelligent control system and a perfect combination of integrated.



Remote connection

One platform controls full process machines, and enables to real-time monitoring the production status of multiple machines.



Simple installation

DIY installation needs only 10 mins.



RESUME

Avoiding repeated work, increasing 80% of your working efficiency



Intelligent initialization

The first milling machine with fully automatic calibration and intelligent initialization in China.

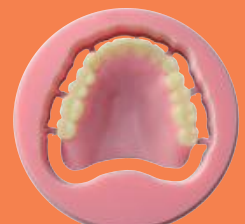
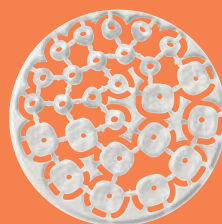


LED light progress bar

Machine will display the processing progress. Reduce personnel inspection time.

Applications

Crown, bridge, coping, implant, full denture and other restoration cases.
Support kinds of soft materials, Zirconia, wax, PEEK, PMMA, etc.



P41 4-axies Wet Dental Mill



4 axis

3 pieces

6 tools

wet mill

01 Small in size

space saving, to realize true "desktop" restoration

All software and hardware are independently developed by Shenzhen UP3D Technology Co.,Ltd. with core technology, intelligent control system and a perfect combination of integrated structure.



02 Powerful grinding machine

supports grinding of multiple materials and wide application on restorations.

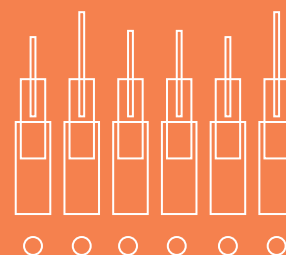
It can process glass ceramics, Pre-milled titanium blank and other materials to support the processing of multiple types of restorations such as crown, inlay, veneer, and implant abutments.



03 Automatic tool changer with 6 tool library

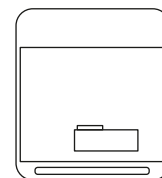
2 sets of different types of tools can be pre-placed

Glass ceramic and Pre-milled titanium blank milling tools can be preset at the same time to improve production efficiency.



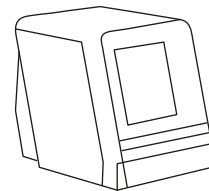
- High automation, the intelligent control system is combined with the machine
- Enable to one-click calibration
- Small in size, save your working space

UP400



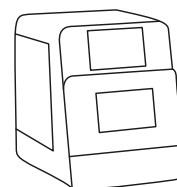
Model	UP400
Size:	305*310*550 (mm)
Weight:	14kg
Cameras:	Dual 3.0 MP (High frame rate)
Accuracy:	<6 microns
Projector:	Customized blue light
	multi-color scanning
Interface:	USB 3.0
Output format:	STL; UM; PLY; OBJ
Power supply:	AC110-240V, 50HZ
Functions:	All-in-one scan
	One click scanning triple tray
	Detect margin line
	True color texture scan
	Impression scan
	Unsectioned models scan
Full arch	12s
12-units die	24s
All-in-one	16s
Triple tray	70s

P53



Model	P53
Dimension	620×430×560 (mm)
Weight	79Kg
Input voltage	AC 100~235V、50~60Hz
Max power	0.8KW
Spindle power	0.52KW (max)
Axis	5-axis simultaneous motion
Milling range	X/Y/Z: 165/135/70mm A: ±30° B: 360°
Milling mode	Dry milling
Max rotate speed	40,000~60,000rpm
Max feed rate	3000mm/min
Tools library	11
Tools changing	Automatic (Air pressure >0.5MPa)
Spindle cooling	Air compression (Air pressure 0.25~0.35MPa)
Milling materials	Zirconia, Wax, PMMA, PEEK and soft materials
Milling time	Coping: Zirconia-10min Wax- 4.5min
	Crown: Zirconia-13min Wax-5.5min
Tools diameter	2+1+0.6 (Φ4)

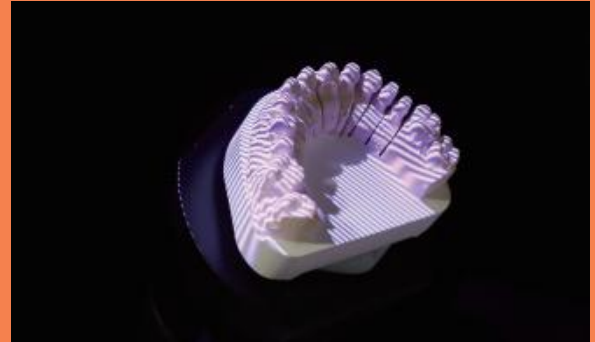
P41



Model	P41
Dimension	520×420×560 (mm)
Weight	70Kg
Input voltage	AC 100~235V、50~60Hz
Max power	0.9KW
Spindle power	0.8KW
Axis	4 axis
Milling range	X/Y/Z: 130/75/65.5mm A: ±360°
Milling mode	Wet milling
Max spindle speed	60,000rpm
Max feed rate	3000mm/min
Tool capacity	6
Tools changing	Automatic (air pressure>0.45MPa)
Spindle cooling	air compression (air pressure0.25~0.35MPa)
Miling materials	Glass ceramic、Pre-milled titanium blank
Miling time	crown: Glass ceramic 20min
	Veneer: Glass ceramic 18min
Tools diameter	2.5+1+0.6 (Glass ceramic)
	3+2+1.5 (Pre-milled titanium blank)

Application- Bridge case

UP400 Scan



UPCAD Design



UPCAM Nesting



P53 Milling

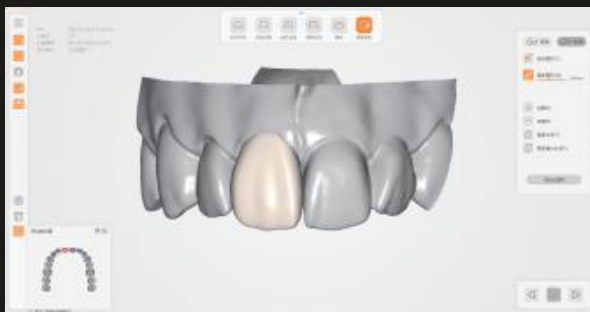


Application- Glass ceramic material

UP400 Scan



UPCAD Design



UPCAM Nesting



P41 Milling





WE ARE FULL DENTAL CAD/CAM SOLUTION DEVELOPER AND MANUFACTURER

UP3D is a high tech company headquartered in Shenzhen since 2013.

As one of the only few companies in the world that are capable of developing a full dental CAD/CAM solution including software and hardware.

We are committed to provide our worldwide customers with high quality-dental CAD/CAM products to benefit from the digital dental revolution.

UP3D-digital technology improves life

企业品牌



UP3D COMPANY DEVELOPMENT MILESTONE

2010

UPCAD project started

2013

UPCAD beta version released

2014

- Independent operation
- Model scanner project started
- CAM project started
- Released U1 in Dentech China, the first blue light scanner in China

2017

- UPMILL project started in 2017
- Model scanner sales reached 500 sets

2016

- AcuBlu model released, the first scanner in the world with multi-color projection.
- UP3D reached staff member of 40.

2015

- UP3D attended IDS cologne
- CE & FCC certificate
- UPCAM 1.0 released
- UP3D Shenzhen headquarter established

2018

- Scanner UP300 released.
- Scanner UP360 released.

2020

- UP560 released, ultra high speed, true color texture
- P52 released, smart dental milling machine
- Full dental CAD/CAM solution developer



Independent R&D



Manufacturing capacity



Core Technology



Affordable price



Digital technology improves life



www.up3ds.com info@up3d.cn 0755-26983202